



Stone Consulting, Inc.

**Railroad Bridge
Inspection Services
&
FRA Part 237
Compliance Assistance**



324 Pennsylvania Avenue West
P.O. Box 306, Warren PA 16365
(814) 726-9870 telephone (814) 726-9855 fax
www.stoneconsulting.com

The Railroad Safety Improvement Act of 2008, has resulted in the FRA imposing new Bridge Safety Standards under 49 CFR Part 237. All track owners must adopt a bridge management program by September 13, 2012.

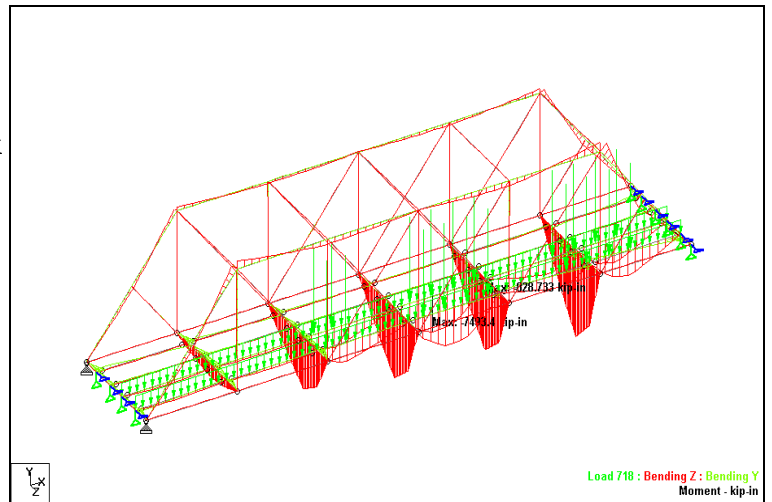
Stone Consulting, Inc. can assist in all aspects of your bridge management program beginning with the mandatory bridge inspections.

Stone Consulting, Inc. has performed bridge inspection and bridge engineering work for the following clients:

- Texas State Railroad
- Mount Hood Railroad
- Saratoga & North Creek Railroad
- Eastern Berks Gateway Railroad
- NRG Huntley Plant Trestle
- New Hope Valley Railroad
- Camp Chase Railroad
- Georges Creek Railroad
- Chenango County IDA
- Ashtabula, Carson and Jefferson Railroad
- Rosebud Mining Company
- Western Maryland Scenic Railroad
- RJ Corman Railroad Company — Beech Creek Line
- Morristown & Erie Railroad
- Duferco Farrell Corporation
- Greater Erie Industrial Development Corp.
- Western New York & Pennsylvania Railroad
- Chicago, Lake Shore & South Bend Railway
- South Branch Valley Railroad
- West Virginia Central Railroad
- Meridian Southern Railway
- Owego & Harford Railroad
- Arcade & Attica Railroad



Bridge Repair & Upgrade Designs



*Bridge Capacity Rating Calculations
Computer Modeling & Analysis of Complex Truss Bridges*

Bridge MP	Spans	Description	Dimensional Description	Span Length (ft)	Overall Length (ft)	Structure Type	Number of Tracks	Crossing	Latitude North	Longitude West	Year Built	Date Last Insp.	Inspector
39.92	1	Corrugated Metal Pipe	5'-0" dia x 40' long	5	5	C	1	Drainage	43°06'18.80"	73°47'46.21"	2006	6/7/2011	Ludwig
40.22	1	Corrugated Metal Pipe	4'-0" dia x 80' long	4	4	C	1	Drainage	43°06'29.26"	73°48'0.99"	2006/1889	6/7/2011	Ludwig
40.24	1	Corrugated Metal Pipe	5'-0" dia x 80' long	4	4	C	1	Drainage	43°06'30.26"	73°48'1.76"	2006	6/7/2011	Ludwig
40.86	2	Stone Culvert Bridge	5'-0" wide x 7' tall	5	12	U	1	Putnam Brook	43°06'33.45"	73°48'42.86"	c.1889	6/7/2011	Ludwig
41.45	2	CMP 2 @ 36" dia	6'-0" x 40' long	3	6	C	1	Trib to Putnam Brook	43°06'23.57"	73°49'25.22"	1950	6/7/2011	Ludwig
41.70	1	Stone Culvert Bridge	4'-0" wide x 52" tall	4	4	B	1	Road Drainage	43°06'18.28"	73°49'36.13"	c.1889	6/7/2011	Ludwig
42.34	1	Deck Plate Girder	40'-8"	41	41	B	1	Route 9N	43°06'01.06"	73°50'20.48"	1925	6/7/2011	Ludwig
42.39	1	Stone Culvert Bridge	4'-6" wide x 6'-0" tall	5	5	B	1	Bell Brook	43°06'00.72"	73°50'34.92"	c.1889	6/7/2011	Ludwig
43.85	2	Stone Culvert Bridge	3'-0" wide x 5'-0" tall	3	10	U	1	Wheeler Creek	43°06'07.88"	73°51'26.01"	c.1889	6/7/2011	Ludwig
44.00	1	Concrete Culvert Bridge	6'-0" wide x 6'-6" tall	6	6	B	1	Wheeler Creek	43°06'15.32"	73°52'01.53"	1925	6/7/2011	Ludwig
44.30	1	Stone Culvert Bridge	3'-0" wide x 5'-0" tall	3	3	C	1	Wheeler Creek	43°06'20.16"	73°52'11.50"	c.1889	6/8/2011	Ludwig

Bridge Inventory List

**For more information, please contact:
Harvey H. Stone, PE - (814) 726-9870 harvey@stoneconsulting.com**