

Stone Consulting, Inc.

Shortline Railroad Projects



324 Pennsylvania Avenue West, P. O. Box 306, Warren PA 16365
Phone: (814) 726-9870 Fax: (814) 726-9855



Shortline Railroad Projects

Services Offered—Project Management . . .

Allegheny Valley Railroad, Oakmont PA

Stone Consulting, Inc. has completed many and varied projects for this dynamic client:

- 40th Street Connector - Created a much more efficient connection to CSX. Project included removal of existing track, turnouts and crossings and reconstruction on new alignment and profile with all new materials. Also included negotiation with landowners and coordination with the City of Pittsburgh.
- Capital Budget and RFAP Applications from 2000 - 2010.
- Butler Plank Grade Crossing - Design, bidding, project management, inspection of new grade crossing related to the construction of a new Walgreens facility - 136' concrete panel crossing.
- Tie Rehabilitation - P&W - Gaging and tie replacement on 17 miles of P&W Subdivision. Project Management including specifications, bidding, tie marking and inspection - 15,000 ties.
- Tie Rehabilitation - W&P - Gaging and tie replacement on 7 miles of W&P Subdivision. Project Management including specifications, bidding, tie marking and inspection - 11,000 ties.
- Complete rebuild of the Indian Run Branch line including the reconstruction of 7 fully reconditioned turnouts with new timber & ballast, 3110 TF of standard track using Class One relay rail, new ties and ballast and 368 TF of at-grade road crossings using all new materials from the subgrade up. New storm drainage consisting of 10 new catch basins and 400' of storm drainage pipe.
- Design and project management of spur track with Hazardous Material Transloading Facility off AVRR main into Sunoco facility.
- Capital improvements grant application for \$5.4 million project replacing worn jointed rail with Class One welded rail along 6 miles of AVRR main, tie renewal and grade crossing upgrade.
- Track rehabilitation of 7 miles including 7,000 ties, switch timber & surfacing of the Brilliant Branch, Pittsburgh Branch and Main Line.
- Flood Damage Appraisal, cost estimates, plans and specifications to reconstruct two rail lines damaged by flooding in the Pittsburgh area. Project includes interfacing with the flood insurance carrier, bidding the project along with providing on-site inspection during the reconstruction efforts.

1997 - 2010 \$10 million

Contact: Russ Peterson, President

(412) 426-2000



**40th Street Connector
Before & After**



... Track Rehabilitation

Erie Times News, Erie PA

Stone Consulting, Inc. was responsible for the Project Management and reconstruction of track that was deteriorated to the point that the servicing railroad refused to operate on it.

2007 - 2008 \$200,000

Contact: Duane Hudak (814) 870-1792



Before & After

Duferco Farrell Corp. (formerly Sharon Steel), Farrell PA

This successful client has called upon our expertise for many projects:

- Design & Project Management for the Phase 1 rehabilitation of numerous sections of the 46-mile in-house rail infrastructure.
- Project administration and construction management for Phase 2 rehabilitation utilizing relay track and special work materials (65 track panels & 15 switch panels) on-site and Caparo force-account union labor for construction.
- Phase 3, Design & Project Management for track reconstruction & locomotive pit.
- Phase 4-5, Design & Project Management for track rehabilitation and 6 at-grade road crossings.



- Crop Yard alignment design.
- Feasibility Study for a shortline railroad.
- West Gate Bridge reconstruction estimate.
- RFAP Grant Applications, funded as requested.

1997 - 2007 \$7.4 million

Contact: Joe Burns, Director of Rail Operations

(724)983-6464 Ext. 241

Ellwood National Forge, Irvine PA

This project consisted of the rehabilitation of existing track for this industrial facility.

2005 - 2006 \$550,000

**Contact: Harold Murphy
(814) 563-6323**



Before & After



. . . Design of Industrial Sidings and Transloading

Greater Erie Industrial Development Corporation (GEIDC)



The construction of the Erie BioFuels biodiesel plant is a major project for the City of Erie revitalization effort. Stone Consulting, Inc. was retained by GEIDC, in partnership with SB3 Corporation, to design the rail yard and rail loading and unloading facilities for the new \$35 million plant on the site of a former International Paper manufacturing facility.

The rail component of this new plant is a \$4.2 million project.



2006 - 2008 \$4.2 million

Contact: Bob Grice (814) 899-6022

Camp Chase Railroad Company Sunoco Partners Marketing & Terminals L.P.



This new, \$1.6 million unloading facility in the suburb of Columbus OH has the capacity to unload 6 tank cars of ethanol at one time. Stone Consulting, Inc. was the Lead Designer and Project Manager of the side track, mainline track realignment and unloading area secondary containment system.

This was a fast-track design-build project that was completed in less than 120 days from preliminary drawings to final construction and the first train into the facility.

2006 \$1.6 million

Contact: Russ Peterson, President (412) 426-4000

Rosebud Mining, Kittanning PA

Rehabilitation of 5 miles of existing track, construction of 4,000 feet of new track and turnouts for a newly re-opened coal mine. Project had to meet Norfolk Southern criteria.

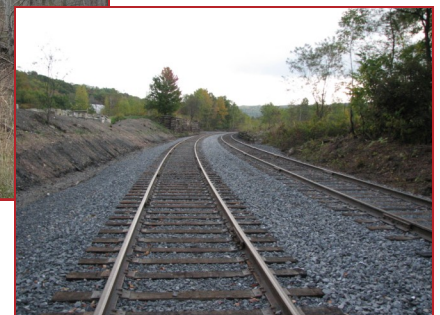
2007 \$900,000

Contact: Jim Barker (724)545-6222

Ext. 222



Before & After





. . . Design of Track and Crossings

Westmoreland County IDC, Greensburg PA

Simultaneous Class-1 abandonments of intersecting branch lines in Westmoreland and Fayette counties created a new shortline railroad opportunity. By combining the two marginal branch lines into a single-operator property, a vital new rail operation was created.

Stone Consulting, Inc. staff has provided these services to this highly successful client:

- Engineering, administration & inspection for a number of track rehab projects ranging from 6 to 23 miles over 10 years.
- Monessen Riverfront Development - Construction of 2,400' of new track for a transloading facility including 1,000' of asphalt embedded track, 2 turnouts and track rehabilitation.
- Design, permitting and inspection of rail access for glass plant constructed adjacent to Sony in the Westmoreland Technology Park which included 9000' of track with 14 crossings.
- New siding at Radebaugh.
- Develop conceptual design for two-mile cut-off to Westmoreland Yard, which will eliminate over seven miles of line.
- Assistance with rail operator selection.
- Emergency bridge repairs.
- Rail Freight Grant Applications from 2000 - 2007.



**Monessen
Riverfront
Development**



1995—2007 \$4.5 million

**Contact: George Church, Project Administrator
(412) 830-3610**

Western New York & Pennsylvania Railroad, Lakeville NY

We were retained by the Livonia Avon & Lakeville Railroad to help lease the trackage from Hornell NY to Corry PA owned by Norfolk Southern Corp. The lease was signed and the WNYP Railroad was formed. Gary Landrio of our office had worked to save this railroad since the early 1990s and was intimately involved in the negotiations. The WNY&P began operations on April 26, 2001.

We assisted the WNYP on the following projects:

- A safety tie replacement project replacing 1,100 ties and a \$750,000 PA Capital budget project to replace ties on a 28 mile stretch from Corry to the New York line bringing line up to Class 3 standards.
- Design and construction management of the Falconer Operations Center.
- A \$750,000 Pennsylvania Capital Budget Project to replace all bad ties from Corry to the NY State line.
- Designed & administered 5 major projects for track rehabilitation, welded rail and signals in NY.



2001-2004 \$12,270,000

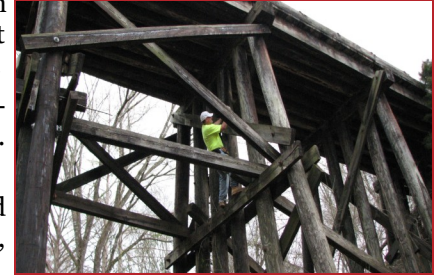
Carl Belke, Chief Engineer (585) 346-2090



. . Bridge Inspections, Ratings, Rehabilitation & Replacement

Stone Consulting, Inc. performs regular bridge inspections for several clients, including:

- **West Virginia State Rail Authority**—Inspection of all bridges which includes 34 on the South Branch Valley Railroad and 35 on the West Virginia Railroad. Regular inspections completed in 2001, 2003 & 2007.
- **Meridian Southern Railway**—Inspection of 81 bridges, predominantly timber trestle bridges, from Meridian to Waynesboro Mississippi. Regular inspections completed in 2000, 2001, 2005 & 2008.
- **Owego & Harford Railroad**—Performed New York State required annual inspections on all 42 steel and timber bridges in 2002, 2003, 2004 & 2006.
- **Arcade & Attica Railroad**—Performed New York State required annual inspections from 2001-2007.



Greater Erie Industrial Development Corporation

The construction of the Erie BioFuels biodiesel plant is a major project for the City of Erie revitalization effort. The rehabilitation of a bridge over Route 5A was needed. Rehabilitation included removal of lead based paint and repainting, deck and steel repairs, drainage improvements and abutment repairs and sealing. We provided all engineering, specifications, inspection and project management.

2006 \$365,000

Contact: Bob Grice (814) 899-6022



Before & After



Rosebud Mining, Kittanning PA

The rehabilitation project for Bridge 15.47 in Windber PA included the inspection and evaluation of the bridge, the performance of capacity “rating” calculations and the design of new components needed to strengthen the bridge. An additional cover-plate was added to the bottom chord of the main girder and all floor beams and stringers were replaced with heavier rolled sections making the bridge capable of handling unit coal trains with 286 kip cars. Stone Consulting, Inc. provided all engineering, specifications, steel detailing, inspections and project management subject to Norfolk Southern Bridge Engineering approval.

2007 \$250,000

Contact: Jim Barker (724)545-6222 Ext. 222

Western New York & Pennsylvania Railroad

Friendship NY Bridge Washout

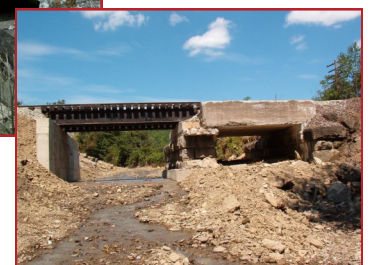
This washout required the replacement of the east abutment and one span of a two span bridge. Stone Consulting, Inc. provided all engineering to design a new poured concrete abutment and replacement span using structural steel. We directed all construction activities and had the bridge back in service 19 days after the washout occurred.

2003

Contact: Carl Belke, Chief Engineer (585) 346-2090



Before & After





. . . Grant Applications

Erie Forge & Steel, Inc., Erie PA

Stone Consulting, Inc. was responsible for the project management, design, bidding and inspection of the removal and reconstruction of track, turnouts and grade crossings to alleviate problems related to oversized loads.

2007–2008 \$600,000

Contact : Joe Goff, Plant Manager (814) 452-2300



Before & After



Ellwood Quality Steels Company New Castle PA

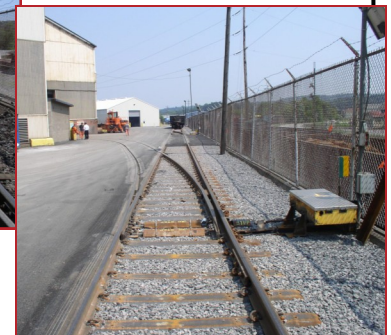
We were responsible for applying for capital budget grants as well as the project management and design of Phases 1 & 2, for a total of 5 phases.

2005–2008 \$901,000

Contact: Rich Schochet, Plant Manager (724) 658-6515



Before & After



Lord Corporation, Saegertown PA



Due to the nature of the Hazardous Materials used by Lord Corporation, this project was a great candidate for the PA Rail Freight Assistance Program. This state-funded project removed thousands of trucks carrying hazardous materials from the Highway System, providing a safer environment for the communities in which those trucks traveled. We were responsible for the design of an industrial rail siding and fill embankment to serve hazardous material tank car loading and unloading facilities.

2004-2005 \$640,000

Contact: Joe McCallion, Manager

Ethanol Plants

Stone Consulting, Inc. has been retained to provide preliminary rail design for 4 ethanol plants located in Pennsylvania including Sunnyside Ethanol, LLC and BioEnergy.



Stone Consulting, Inc.

324 Pennsylvania Avenue West

P.O. Box 306

Warren PA 16365

(814) 726-9870 telephone (814) 726-9855 fax

www.stoneconsulting.com

stone@stoneconsulting.com