

Stone Consulting, Inc.

Industrial Railroad Projects



324 Pennsylvania Avenue West, P. O. Box 306, Warren PA 16365
Phone: (814) 726-9870 Fax: (814) 726-9855



Industrial Railroad Projects

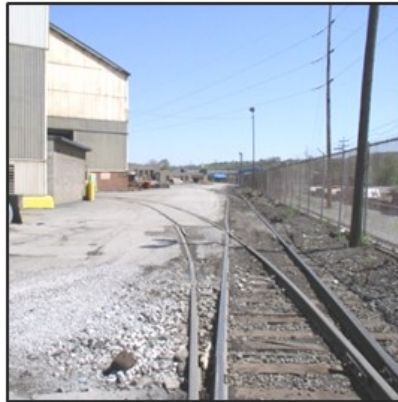
Ellwood Group, Incorporated

Ellwood Group, Inc. (EGI) is a family-owned, privately-held company that has been in operations for over 100 years. Stone Consulting has performed projects for various companies of EGI throughout the years, including:

Ellwood Quality Steels Company, New Castle PA

In Plant Track Design Services

We were retained by Ellwood Quality Steels Company of New Castle PA to assist them with Phases 1 & 2 of their In-Plant Track Design Services. We were responsible for applying for capital budget grants as well as the project management and design of each phase. Once the specifications for each phase were approved by PADOT Bureau of Rail Freight, each project was bid out and awarded to the lowest responsible bidder. We were responsible for providing general construction observation during the construction phases. We reviewed and approved payment requests by the Contractor, reviewed material submissions and any required shop drawings. When the construction work was completed for each phase, we provided final inspections.



Before and After



Preliminary Evaluation of Single Leg Gantry Crane Installation

Stone Consulting was retained to assess the proposed installation of a single leg gantry crane at their New Castle PA facility and provide a recommendation report.

At-Grade Crossing Options Evaluation

Stone Consulting prepared an at-grade crossing evaluation involving the delineation of four different grade crossing options and developed a cost estimate of each option. The cost estimate included the reconstruction or rehabilitation of the existing track, the installation of the grade crossing materials and the design and inspection costs associated with each of the options.





Ellwood Mill Products, New Castle PA

Track Realignment

In 2010, Stone Consulting was retained to determine the feasibility and provide a plan and profile for track changes along with a cost estimate for the scrap loading area at Ellwood Mill Products (EMP) in New Castle PA. EMP then retained Stone to finalize detailed plans and specifications and bid the project out to railroad contractors.



Ellwood Crankshaft and Machine, Hermitage PA

Railroad Track Construction

Stone Consulting was responsible for the design of a 625' railroad spur off of Norfolk Southern (NS) main to serve the new diesel engine crankshaft facility in Sharon PA. The project included the environmental permitting, design and plan approval by NS engineering as well as coordination of the on-site utilities and new driveway entrance with the site engineer. In addition to the engineering and design, Stone Consulting assisted in obtaining a \$260,000 PADOT Bureau of Rail Freight Assistance Grant for this project. The project was cancelled prior to the opening of bids due to circumstances beyond Ellwood's control.



Ellwood National Forge, Irvine PA

Capital Budget Rail Improvements

This project consisted of the rehabilitation of the existing main tracks for this industrial facility as well as mitigation of excessive curves and concrete crossings.



Before and After



North American Forgemasters, New Castle PA

Track Design

After North American Forgemasters, a partner company of Ellwood Group, put an addition on their building, Stone was responsible for redesigning the track into the new building's doors.



WHEMCO, Inc.

Stone Consulting has completed various projects for WHEMCO, who has six operating companies and is a world-wide supplier of heavy industrial components for the metals, power generation, mining and shipbuilding industries:

Lehigh Specialty Melting, Inc., Latrobe PA

Track Reconstruction Projects

The total reconstruction of Lehigh Specialty Melting's 53-acre steel plant railroad track system is now complete. What started out in 2006 as a plant lead track reconstruction project soon grew into a 3-phase plant-wide track reconstruction project. Stone Consulting, Inc., working in conjunction with Lehigh and the Pennsylvania Department of Transportation's Bureau of Rail Freight, Ports and Waterways secured two Rail Freight Grants totaling approximately \$780,000 for the projects. With the Commonwealth's assistance, Lehigh has completed the final phase of its project and has moved the plant's transportation operations into the 21st century. The 3 phases, costing more than \$1,500,000, included the replacement of 8 turnouts, the removal of nearly 2,500' of track and the total reconstruction of over 8,200' of track including new drainage facilities and building door modifications.



Before and After



Johnstown Specialty Casting, Inc., Johnstown PA

Johnstown Track Inspection

Stone Consulting inspected the track at WHEMCO's Johnstown site as well as approximately one mile of track that was rail banked by Cambria County in order to determine the approximate cost for rehabilitating the track in order to achieve FRA Class 1 status for the rail line. Stone Consulting provided a report which outlined the condition of the track and an approximate cost to bring it to FRA Class 1 status.

WHEMCO Steel Castings, Midland PA

Midland Track Evaluation

After a car was derailed by the delivering carrier, WHEMCO Steel Castings retained Stone Consulting to inspect, evaluate and provide an estimate for track reconstruction at their Midland PA plant.

Erie Forge & Steel, Erie PA

Track Reconstruction

Stone Consulting assisted in obtaining two grants and was responsible for the project management, design, bidding and inspection of the removal and reconstruction of track turnouts and grade crossings to alleviate problems related to oversized loads in two projects at the plant.



Before and After





TMS International, West Mifflin PA

Track Reconstruction

The TMS International facility in the Borough of West Mifflin, Allegheny County received a 2014 Pennsylvania Department of Transportation Rail Freight Assistance Program Grant (RFAP). The RFAP grant was the first for TMS and used for the reconstruction of the facilities main lead track and 5 turnouts off that lead track. Stone Consulting prepared the project's plans and specifications and assisted TMS in the bidding of the project. In addition, Stone also aided TMS in executing the grant documentation as well as construction management, on-site inspection and the final project closeout.



Before and After



Renovo Rail Industries, Renovo PA

Track Rehabilitation and Construction

Stone Consulting prepared a successful grant application and was responsible for the design, bidding and construction management for the rehabilitation of 2500 feet of track, new track construction, modifications to an existing building and concrete work on floors.

The Clearfield Foundation, Clearfield PA

Industrial Track Rehabilitation & Construction

HRI, an asphalt contractor, agreed to purchase an industrial site from The Clearfield Foundation in the Fireman's Industrial Park if sidings could be installed to accommodate their proposed asphalt storage facility. Stone Consulting assisted in obtaining a grant and provided design, inspection and construction management for the three siding project.



Fluids Management, Phillipsburg PA

Access Track Design & Inspection

Stone Consulting was responsible for the engineering design for a rail siding that included 772 TF of new track, a turnout, derail, bumping post, and gravel road crossing. Stone Consulting prepared plans & specifications and assisted Fluids Management with construction observation.



Before and After





United Refining Company, Warren PA

Biofuels Tank Car Unloading Area

In 2008, United Refining Company of Warren PA required a tank car unloading area in order for them to bring in ethanol by rail to blend with their gasoline products. Stone Consulting, Inc. designed the track siding, spill containment system and provided the specifications and design assistance for top of car access system. The 7 car unloading station design is expandable to add an additional 5 car unloading station on the opposite side using the same top of car access rack system.



United Refining Company, Warren PA

Bridge Inspections

Responsible for inspecting the three combination unit bridges at United Refining Company in Warren PA. Upon completion of inspection, Stone Consulting provided an inspection and rating report along with drawings for needed upgrades to allow for the removal of the current weight restrictions.

Kiantone Pipeline Corporation, West Seneca NY

West Seneca Rail Siding Design Services

Stone Consulting was retained by Kiantone Pipeline Corporation (KPC), a division of United Refining Company, to provide the detailed design of a crude oil railcar unloading facility at their West Seneca NY location. Stone's design was in accordance with the specifications provided by KPC's Process Engineering Department. Work included track design to Norfolk Southern (NS) standards, spill containment design, researching available crude oil car fleets and determining lengths, integrating plans for rack system, preparing bid documents and specifications, subsurface testing inspection/review, assisting with NS negotiations/approvals, assisting with environmental permitting and providing an erosion/sedimentation control plan.





Solvay Paperboard, Syracuse NY

Design and construction observation of a weigh-in-motion scale and associated tracks.

RockTenn, Syracuse NY

Improvements to Spur Track at Solvay Mill

Inspection and overall evaluation of an existing spur track that was to have an elevated pipeline constructed adjacent to the track. Upon completion of the inspection, Stone Consulting provided a report of findings as well as recommendations as to ways to mitigate the possible danger and costs for future maintenance, derailments and utilization of the spur track.



Railworks Track Services

NRG Huntley Power Plant Trestle Inspection

Stone Consulting, Inc. and its predecessor entity of TranSystems, inspected and evaluated the capacity for continued use of a 1070 feet long, 71 span trestle system located in Tonawanda NY that once carried coal cars onto the power generation plant. The trestle is a mixture of timber, steel and concrete spans that increases in elevation from 10 feet to 30 feet tall. After the initial inspection and evaluation, Stone Consulting provided annual inspection for the next 3 years.



Erie Coke Corporation, Erie PA

Trestle Inspection & Rating

Inspection and rating of the 59-span coal unloading trestle at Erie Coke Corporation.

LTV Steel Corporation, Cleveland OH

Net Liquidation Valuation Appraisal

Net Liquidation Valuation appraisal project of the River Terminal, Cuyahoga Valley, and Chicago Shortline Railroad for formal evidence submission into Federal Bankruptcy Court proceedings. Equipment and track; excess of \$10 million inclusive of real estate.



Services Offered

Stone Consulting, Inc. offers services to fill your every need in the railroad industry.

Appraisals / Financial:

- ◆ Ridership Surveys
- ◆ NLV Appraisals
- ◆ Rolling Stock Appraisals

Bridges:

- ◆ FRA Part 237 Bridge Management Plans
- ◆ FRA Part 237 Bridge Inspections
- ◆ Bridge Ratings
- ◆ Computer Load Modeling
- ◆ New Bridge Design
- ◆ Bridge Rehabilitation Plans

Construction Management:

- ◆ Specification Writing
- ◆ Bid Management
- ◆ Permitting
- ◆ Contract Management
- ◆ Construction Inspection

Environmental:

- ◆ Erosion and Sedimentation Plans (BMP's)
- ◆ Spill Prevention, Control, & Countermeasures
- ◆ Federal, State, and Local Permitting
- ◆ Wetland Mitigation
- ◆ Storm Water Management

Grants:

- ◆ Grant Writing
- ◆ Procurement Integrity
- ◆ Lifespan Management

Facilities:

- ◆ Site Grading and Design
- ◆ Shop / Maintenance Building Design
- ◆ Utilities
- ◆ Roadway Access
- ◆ Transloading

Mechanical:

- ◆ Diesel Locomotive
 - ◇ Inspections
 - ◇ Maintenance Program Management
 - ◇ Appraisals
- ◆ Passenger Car Structural Inspections
- ◆ Steam and Form 4 Program Management

Project Management:

- ◆ Railroad Start-up
- ◆ Capital Trackage Rehabilitation
- ◆ FRA Compliance
- ◆ Grade Crossing Signal Renewals
- ◆ Capital Infrastructure

Track:

- ◆ Yard Designs
- ◆ Terminal Layout
- ◆ Drainage Plans and Design
- ◆ Sidings
- ◆ FRA Compliant Track Inspections

Stone Consulting, Inc. offers our full range of services throughout North America. We have had projects in 43 states, Canada, Mexico, and the Philippines. We have Professional Engineers on staff that are licensed in 47 states. Our diverse staff has expertise with track inspection, drainage, financial analysis, structural engineering and environmental issues. Our staff also has "hands on" railroad experience in Operations, Mechanical and Maintenance-of-Way.



Stone Consulting, Inc.

324 Pennsylvania Avenue West

P.O. Box 306

Warren PA 16365

(814) 726-9870 telephone (814) 726-9855 fax

www.stoneconsulting.com