

Stone Consulting, Inc.

Mechanical & Equipment Consulting



324 Pennsylvania Avenue West, P. O. Box 306, Warren PA 16365
Phone: (814) 726-9870 Fax: (814) 726-9855
Visit our Web Site at www.stoneconsulting.com

Mechanical Evaluations & Assessment

Hands-on experience in rebuilding and troubleshooting of equipment is important in considering a company to make a mechanical evaluation of equipment, whether for purchasing, financing or fleet renewal or overhaul.

Stone Consulting, Inc. has experienced people who have gotten their hands dirty and understand how to assess locomotives and rolling stock in order to give you expert advice on how to keep equipment running efficiently or plan a rebuild or renewal program. We can help you develop an overhaul work scope or simply guide you through a purchase with an unbiased independent evaluation.



Equipment Appraisals & Inspections

Valuations, Comprehensive Conditional Inspections and Damage Appraisals

We are proud of our ability to find background and sale information on railroad equipment from older switcher locomotives to modern car and locomotive fleets. Our extensive library of mechanical and sale information coupled with our in-depth knowledge and experience with railroad rolling stock is the basis for finding those comparable sales that will stand the test for equipment valuations.

The client, whether it is a local bank, the owner or even the IRS – must understand the assets, the actual market and how such sales are made – particularly if the client is taking any title or interest. We take the additional time to ensure that the reader understands the market and the equipment as related to market factors.

Our services also include damage appraisals for settlement of litigation claims that can help our clients not only save money on repair damages but may help to protect them from liability issues.

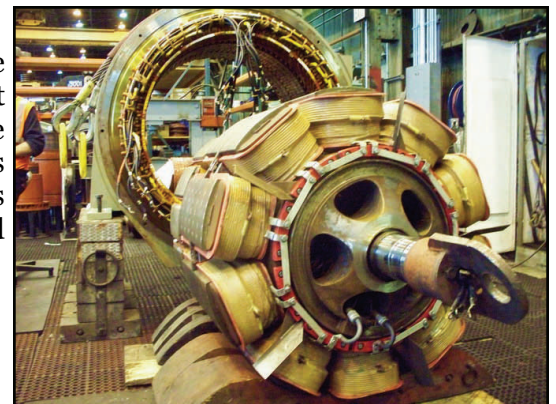


Project Management and Quality Assurance

Stone Consulting, Inc. has the ability and expertise to assist in the planning and management of fleet overhauls, new equipment acquisitions and major capital projects to leverage your in-house resources and provide specialized knowledge that assures the success of your project. We also are able to provide quality assurance audits to make sure that proper processes and procedures are being met and work is progressing as planned. Other ways we can assist you are:

- Overhaul Workscope Development
- Acceptance Inspections
- Third Party Review and Oversight

We can provide all levels and phases of Project Management involving locomotive and rolling stock capital projects for short line and regional railroad operators, financial institutions, port authorities, insurance companies and other parties.



Mechanical Facilities & Structures

Having the right facility to maintain your rolling stock is important to maximize your maintenance budget and equipment availability and reliability. Let us help assist you in maximizing the potential of an existing facility or designing a new one that incorporates best practices for getting the job done safely and efficiently and complying with environmental regulations.



Historical Equipment

We bring a solid background to solving problems and providing services for those in need of rebuilding, restoring or evaluating and appraising vintage and historical railroad equipment. This expertise involves everything from mechanical and troubleshooting issues with vintage diesels to Project Management of restoring steam locomotives and historic passenger cars. Stone Consulting also has the ability and knowledge to appraise vintage equipment and understands the nuances of working with 501(c)3 organizations, the rail preservation community and rail preservationists.



About Stone Consulting, Inc.

Stone Consulting, Inc. has hands-on people who work in a dynamic and creative atmosphere with extensive knowledge in engineering, consulting, rail operations, mechanical management, industrial development and streetcars. We can help you with track rehabilitations, new sidings, transloads, shortline start-ups and of course, mechanical issues.

We are a small company that is able to give you personal attention and an ease of comfort in which to do business. Our home office is located in Warren, Pennsylvania but our clients are nationwide.

Key Personnel



Harvey H. Stone, P.E., Executive Vice President

Harvey holds a license in 31 states and has over 40 years engineering experience with particular focus in track and structures for all your railroad engineering needs. He is a hands-on P.E. who believes in providing value and quality service to all of our clients.

Randall D. Gustafson, Vice President Operations

Randy has an extensive knowledge of heritage rail equipment and project management of historic rolling stock and appraisal valuations. His over 20 years in the business can be a real asset to anyone concerned with historic or heritage equipment and NLV equipment appraisals.



Douglas J. Ellison, Operations Manager

Doug has extensive hands-on mechanical experience with everything from 539 Alcos to SD70Mac's. He has managed a contract locomotive repair facility and has been involved with locomotive lease fleet repairs and rebuilds / upgrades. Doug also worked as General Foreman of Alaska Railroad's Anchorage Locomotive Repair Shops including roundhouse operations, fueling racks, wheel shop, electric motor shop, back shop and locomotive capital project management. Doug has over 25 years railroad mechanical experience from machinist to senior management and still holds a locomotive engineers certificate for the operating end of "hands-on".





Stone Consulting, Inc.

324 Pennsylvania Avenue West

P.O. Box 306

Warren PA 16365

(814) 726-9870 telephone (814) 726-9855 fax

www.stoneconsulting.com

stone@stoneconsulting.com